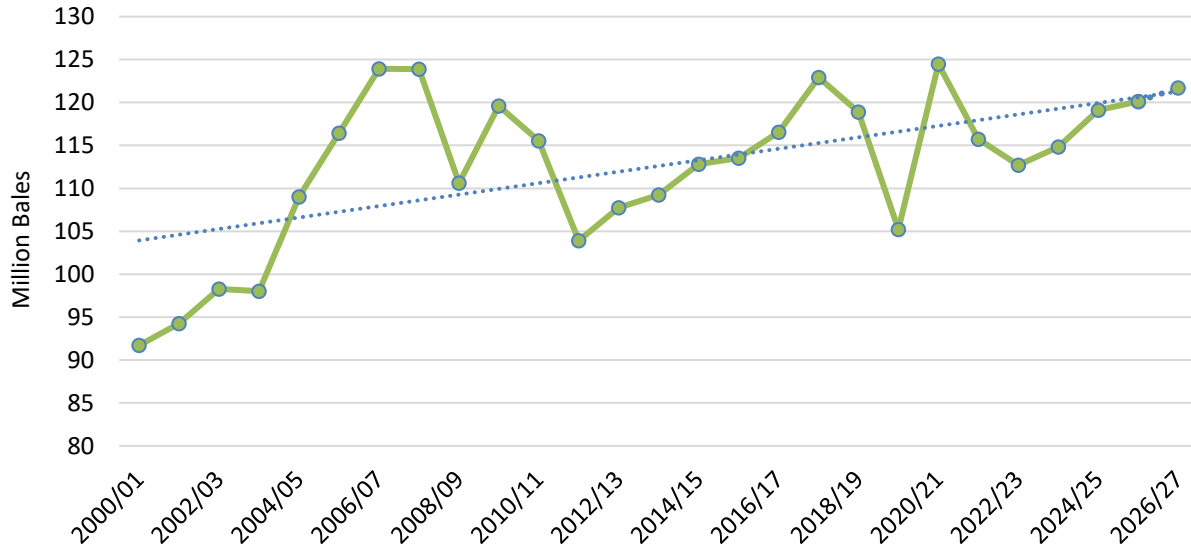


# Cotton: World Markets and Trade

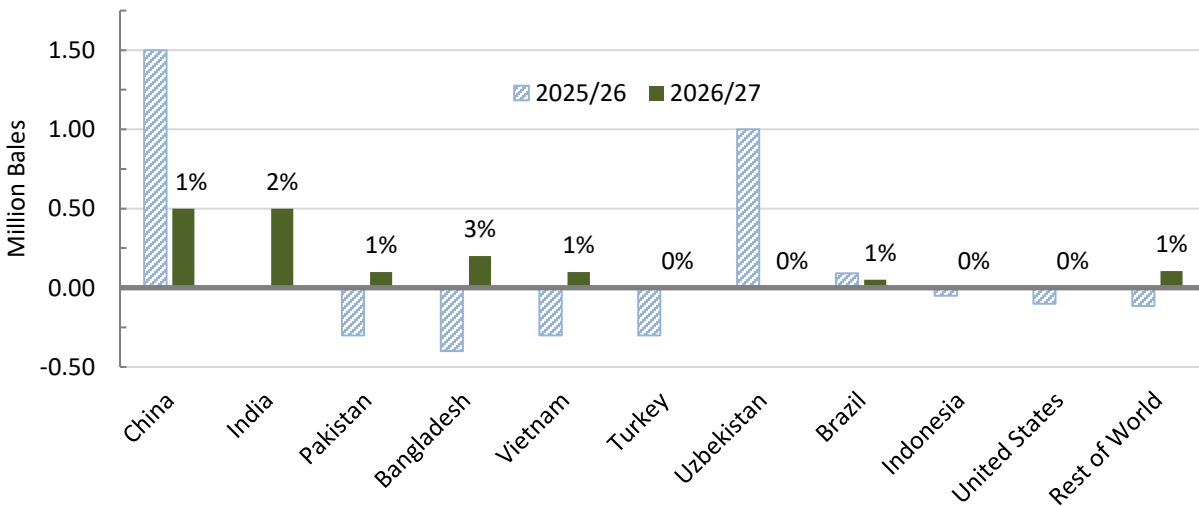
## 2026/27 Global Cotton Consumption Forecast at 6-Year High



Global cotton consumption is forecast to rise slightly to 121.7 million bales in marketing year 2026/27 (August 2026 – July 2027), a 6-year high if realized. The projection aligns with the 25-year average for growth in cotton demand after it slowed in 2025/26. An expected drawdown in stocks, resilient consumer demand, and global oil supply shortages support demand despite higher cotton prices and economic uncertainties.

Global cotton production is forecast to fall 5 percent to 116.0 million bales in 2026/27 after reaching the highest level in more than a decade in 2025/26. As a result, global consumption growth will be supported by a projected drawdown in ending stocks. Global trade is only projected down slightly year over year as top exporters Brazil and the United States use stocks to maintain shipments. Stocks in top-consuming countries China and India are also forecast down year over year as their domestic consumption grows.

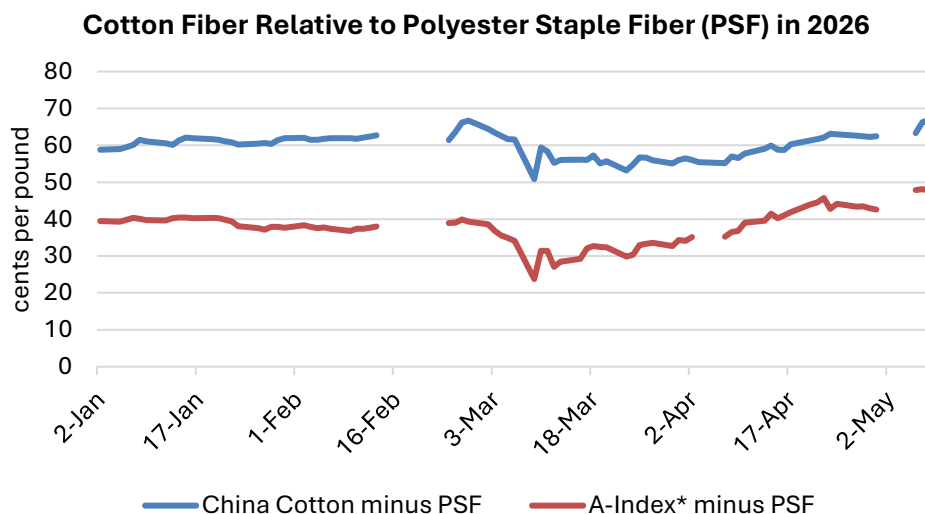
## Annual Change in Cotton Use in Top 10 Consuming Countries



Global cotton demand is also supported by resilient consumer demand in top cotton product consuming countries: the United States, China, and the European Union.<sup>1</sup> U.S. consumer demand for apparel products remained strong in 2025 as retail sales at clothing stores grew 8 percent. Despite increased demand, U.S. imports of apparel products fell slightly in 2025 as uncertainty around U.S. tariffs disrupted sourcing decisions along the textile supply chain. The gap between imports and retail sales suggests that retailers will need to replenish inventories in 2026, especially as U.S. economic growth is forecast to accelerate in 2026 and tariffs have been reduced below 2025 levels.

Retail sales data for China also shows strong domestic demand for apparel despite slowing economic growth as stimulus efforts focus on household consumption. Furthermore, China exports of cotton products grew in 2025 as exporters were able to expand in the European Union and other markets in response to high tariffs in the U.S. market. As a result of these changing trade patterns, EU cotton product imports hit a record high in 2025 despite muted economic growth and retail sales. This suggests that EU cotton product inventories are high at the start of 2026 and demand for further imports may be weaker than in the United States.

Cotton demand growth continues to be tempered by competition with synthetic fibers, but the recent oil supply shock has given cotton a potential advantage over polyester in the coming months. Polyester prices have risen along with oil prices and have been more volatile than usual, but the simultaneous rise in cotton prices has weakened the price advantage cotton would have gained. Global oil supply shortages are expected to cause shortages in feedstock for synthetic fibers that will create ripple effects along the textile supply chain that benefit cotton. Higher oil prices are also expected to drive inflation in the cost of consumer goods around the world which will moderate the demand for textiles and apparel, consequently limiting the potential growth in cotton demand. The strength of the impact on the textile supply chain and consumer demand will depend on how long oil prices remain elevated.



Note: A-Index\* is a customs-cleared estimate in China (including 1-percent import tariff and 9-percent Value Added Tax). Polyester Staple Fiber (PSF) spot price in China. China Cotton is the spot price noted in the Price Series below.

<sup>1</sup> Sources include U.S. Census Bureau Monthly Retail Trade Report “Clothing stores”; U.S. Bureau of Labor Statistics “Consumer Price Index for All Urban Consumers: Apparel in U.S. City Average”; International Monetary Fund’s April 2026 World Economic Outlook; National Bureau of Statistics of China “Total Retail Sales of Consumer Goods”; and Eurostat “Retail sale of non-food products (except fuel).”

## 2026/27 Outlook

Global production is forecast down 6.6 million bales to 116.0 million as smaller crops in Australia, Brazil, China, Pakistan, Turkey, and the United States more than offset higher output in Argentina and India. Global consumption is forecast to rise 1.6 million bales to reach a 6-year high of 121.7 million. Of the top five consuming countries, all are expected to have higher use.

Global trade is forecast down 400,000 bales to 43.3 million. Although the top five importers are expected to witness growth, these gains are offset by sixth-place India dropping by more than half due to ample domestic supplies. Vietnam is forecast to be the top importer at 8.0 million bales, a record if realized. Brazil is forecast to remain the largest exporter with a record 15.0 million bales, followed by the United States at 12.3 million.

With rising consumption and falling output, global ending stocks are forecast to drop 5.4 million bales to 71.8 million on notable reductions in Australia, Brazil, China, India, the United States, and Uzbekistan. The U.S. season-average farm price for 2026/27 is forecast at 73 cents per pound, up 10 cents from the previous year.

## 2025/26 Outlook

Production is forecast up nearly 800,000 bales this month to 122.6 million on a larger Uzbekistan crop. Consumption is raised 1.0 million bales to 120.1 million as higher use in China and Uzbekistan more than offsets lower consumption in Pakistan and Vietnam. Global exports are forecast nearly unchanged at 43.8 million bales as an increase for Brazil offsets a reduction for India. Lower Pakistan and Vietnam imports offset a 600,000-bale increase for China. Global ending stocks are raised over 200,000 bales to 77.3 million. The U.S. season-average farm price is forecast up 2 cents to 63 cents per pound.

### 2025/26 Trade Outlook (1,000 480-lb Bales)

#### Major Importers:

	Previous	Current	Change	Reason
<b>WORLD</b>	43,748	<b>43,780</b>	32	
<b>China</b>	6,000	<b>6,600</b>	600	Import data and higher consumption
<b>Pakistan</b>	5,200	<b>4,800</b>	-400	Import data
<b>Vietnam</b>	7,800	<b>7,600</b>	-200	Lower consumption

#### Major Exporters:

	Previous	Current	Change	
<b>WORLD</b>	43,724	<b>43,776</b>	52	
<b>Brazil</b>	14,500	<b>14,700</b>	200	Export data
<b>India</b>	1,200	<b>1,000</b>	-200	Export data

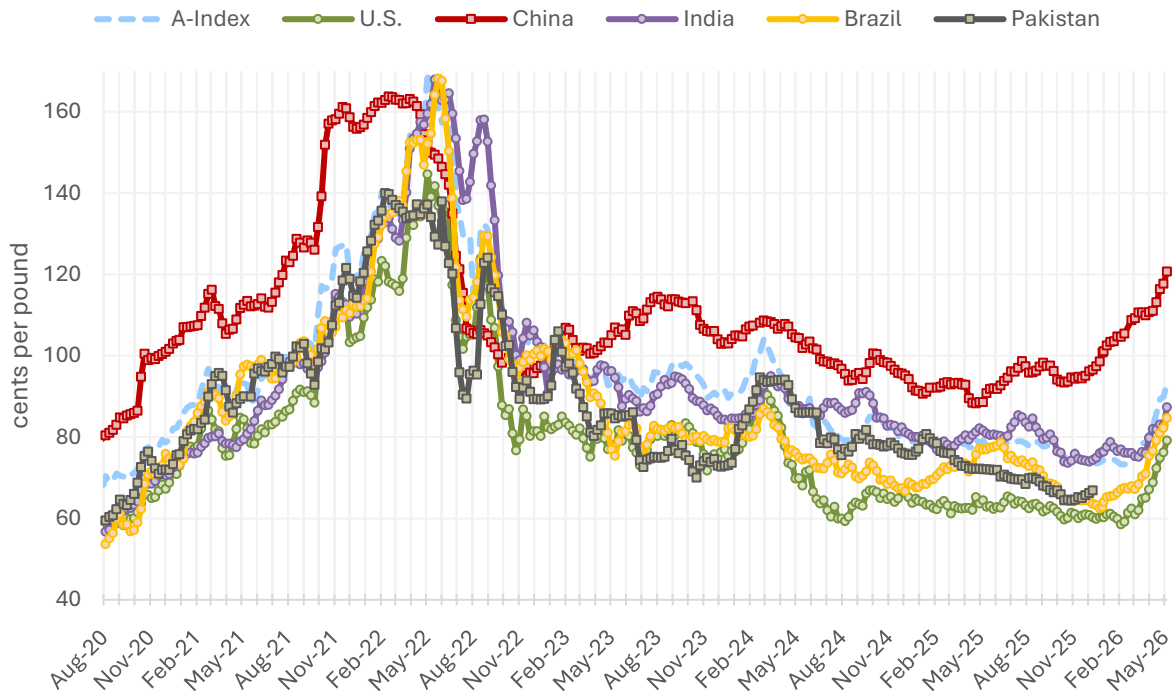
## Futures and Spot Prices

Since the last WASDE report, cotton futures on the Intercontinental Exchange (ICE) have risen 13 cents to around 84 cents per pound.

Changes Since April WASDE (cents per pound)

	A-Index	U.S.	China	India	Brazil
7-Apr	82.6	68.0	110.8	82.0	76.0
8-May	92.8	79.9	121.1	88.5	86.2
<b>Change</b>	<b>10.2</b>	<b>11.9</b>	<b>10.3</b>	<b>6.5</b>	<b>10.2</b>

Weekly Cotton Prices



[Notes on Price Series](#)

### Questions may be directed to:

Stephanie Galbraith – Foreign Agricultural Service

[stephanie.galbraith@usda.gov](mailto:stephanie.galbraith@usda.gov)

Tony Halstead – Foreign Agricultural Service

[tony.halstead@usda.gov](mailto:tony.halstead@usda.gov)

## Notes on Price Series

**A-Index** is published by Cotton Outlook and reflects the average of the five cheapest quotations (quality being middling 1<sup>1/8</sup> inch) of upland cottons traded internationally; the delivery price reflects Cost and Freight (CFR) to a Far Eastern Port.

**U.S.** is the simple average reported by the Agricultural Marketing Service, Free On Board (FOB) car/truck across seven U.S. spot markets of grade strict low middling.

**China** is the reported China Cotton Price Index (i.e., CCIndex 3128B) and reflects the national weighted average of middling grade cotton; the delivery price is at the textile mill in China.

**India** is the Shankar-6 (middling grade 29-3.8-76) spot price and is reported ex-gin (at the gin yard) in Gujarat.

**Brazil** is strict low middling and reflects the delivered price to a mill in São Paulo.

**Pakistan** is the ex-gin (at the gin yard) price in Karachi reflecting a 1<sup>1/16</sup> inch staple and grade 3. The Karachi Cotton Association suspended publication of Pakistan cotton price statistics as of December 12, 2025.

### Production, Supply, and Distribution (PSD) Attributes for Cotton

(Note: Area Harvested is reported in thousand hectares and all other attributes in thousand 480-lb bale equivalents.)

**Marketing Year:** August – July, for example, the 2024/25 marketing year is August 1, 2024 – July 31, 2025.

**Area Harvested:** The area of land planted to cotton from which seed cotton is harvested.

**Beginning Stocks:** The quantity of cotton lint physically located within a country on August 1 (the first day of the marketing year, for example, August 1, 2023 of the 2023/24 marketing year) and includes cotton lint in transit. Beginning stocks equal the ending stocks of the previous year.

**Production:** The quantity of cotton lint ginned from harvested seed cotton during the marketing year and does not include cotton [linters](#) (short fibers attached to cottonseed).

**Imports/Exports:** The quantity of cotton lint physically imported into or exported from the country during the respective marketing year. This includes the Harmonized System (HS) code specific to the four-digit heading 5201 (Cotton, not carded or combed) and specific to unprocessed cotton lint. For some countries, imports include cotton bales in bonded warehouses that have *and* have not cleared customs.

**Domestic Use:** Also referred to as cotton consumption or mill use. All cotton lint that has been processed during the marketing year and excludes cotton linters. Domestic yarn production (100% cotton fiber or cotton blended with other fibers) usually accounts for more than 90 percent of domestic use. Yarn production occurs at a spinning mill and hence is also referred to as “spinning”. Use outside of yarn production typically includes nonwoven fabric production (see [nonwoven products](#)).

**Ending Stocks:** The quantity of cotton lint physically located within a country on July 31 (the last day of the marketing year, for example, July 31, 2024, of the 2023/24 marketing year) and includes cotton lint in transit. Ending Stocks will always equal the following year’s beginning stocks.

**Loss:** Cotton that has been destroyed or cannot be accounted for. Loss may also include “negative loss” when the estimates of Ending Stocks exceed the difference between **Total Supply** and total use (total use is equal to **Exports** plus **Domestic Use**).

## Other Terminology

**Cotton Textiles:** Refers to both the yarn and fabric industries. This mostly pertains to spinning mills (yarn manufacturers), weavers (woven fabric manufacturers), and knitters (knit fabric manufacturers).<sup>2</sup>

**Cotton Products:** Refers to end-use products including apparel and home goods (e.g., towels and bed sheets) as well as [nonwoven products](#) (e.g., medical and hygiene products). When referencing “cotton product” trade data, certain imports are not included that contain cotton fiber. Circular analyses include HS (Harmonized System) codes that specify cotton as the primary fiber and typically state “of cotton” in the product code description.

**Garment Manufacturers:** Typically reflects cut-and-sew and finishing operations to assemble and produce the final end-products such as apparel (i.e., cotton products).

### Example of a Cotton Supply Chain

Cotton planted [**Farm**] → Cotton harvested [**Farm**] → Cotton ginned to separate lint from seed and compressed into bale (represented as Production in the PSD) [**Gin**] → Cotton bales spun into yarn or fibers processed into nonwoven products (represented as Domestic Use in the PSD) [**Spinning Mill**] → Yarn woven or knit into fabric [**Fabric Mill**] → Fabric is dyed and processed [**Fabric Mill**] → Finished fabric is cut-and-sewn into apparel or other finished product [**Garment Manufacturer**] → [**Retailer**]

The Foreign Agricultural Service (FAS) updates its production, supply, and distribution (PSD) database for cotton, oilseeds, and grains at 12:00 p.m. on the day the *World Agricultural Supply and Demand Estimates* (WASDE) report is released. This circular is released by 12:15 p.m.

### FAS Reports and Databases:

Current *World Markets and Trade and World Agricultural Production* Reports:

<https://apps.fas.usda.gov/psdonline/app/index.html#/app/downloads>

Archives *World Markets and Trade and World Agricultural Production* Reports:

[https://www.fas.usda.gov/data/search?reports%5B0%5D=report\\_type%3A10259](https://www.fas.usda.gov/data/search?reports%5B0%5D=report_type%3A10259)

Production, Supply and Distribution Database (PSD Online):

<https://apps.fas.usda.gov/psdonline/app/index.html#/app/home>

Global Agricultural Trade System (U.S. Exports and Imports):

<http://apps.fas.usda.gov/gats/default.aspx>

Export Sales Report:

<http://apps.fas.usda.gov/esrqs/#/esr-query>

Global Agricultural Information Network (Agricultural Attaché Reports):

<https://www.fas.usda.gov/data/gain>

### Other USDA Reports:

World Agricultural Supply and Demand Estimates (WASDE):

<http://www.usda.gov/oce/commodity/wasde/>

Economic Research Service:

<http://www.ers.usda.gov/topics/crops>

National Agricultural Statistics Service:

<http://www.nass.usda.gov/Publications>

---

<sup>2</sup> Dyeing operations can occur anywhere between the manufacture of yarn, fabric, and end-product but are typically at the fabric mill.

**Summary of Changes in estimates and Forecasts from Last Month**  
**(1,000 480 lb Bales and 1,000 Ha)**

Country Mktg Year	Area Harvested	Beginning Stocks	Production	Imports	Exports	Domestic Use	Loss	Ending Stocks
<b>Argentina</b>								
2025/26	-55	0	-130	5	-25	0	0	-100
<b>Brazil</b>								
2023/24	0	0	0	0	0	-147	0	147
2024/25	0	147	0	0	0	-132	0	279
2025/26	0	279	0	0	200	-50	0	129
<b>China</b>								
2025/26	0	0	0	600	0	500	0	100
<b>El Salvador</b>								
2025/26	0	0	0	0	2	0	0	-2
<b>France</b>								
2022/23	0	0	0	0	1	-1	0	0
2023/24	0	0	0	0	3	-3	0	0
2024/25	0	0	0	0	1	-1	0	0
<b>Germany</b>								
2023/24	0	0	0	1	0	1	0	0
2024/25	0	0	0	1	0	1	0	0
<b>Greece</b>								
2024/25	0	0	0	-4	1	0	0	-5
2025/26	0	-5	0	0	0	0	0	-5
<b>India</b>								
2025/26	0	0	0	0	-200	0	0	200
<b>Kazakhstan</b>								
2025/26	6	0	25	0	25	0	0	0
<b>Korea, South</b>								
2025/26	0	0	0	-25	0	-25	0	0
<b>Latvia</b>								
2025/26	0	0	0	2	0	2	0	0
<b>Pakistan</b>								
2024/25	0	0	0	0	0	-200	0	200
2025/26	0	200	0	-400	0	-300	0	100
<b>Paraguay</b>								
2025/26	0	0	0	0	-25	0	0	25

**Summary of Changes in estimates and Forecasts from Last Month (Continued)**  
**(1,000 480 lb Bales and 1,000 Ha)**

Country Mktg Year	Area Harvested	Beginning Stocks	Production	Imports	Exports	Domestic Use	Loss	Ending Stocks
<b>Sudan</b>								
2024/25	0	0	0	0	25	0	0	-25
2025/26	0	-25	0	0	50	0	0	-75
<b>Syria</b>								
2025/26	0	0	0	0	0	-25	0	25
<b>Taiwan</b>								
2025/26	0	0	0	0	5	-5	0	0
<b>Tanzania</b>								
2025/26	0	0	0	0	50	0	0	-50
<b>United States</b>								
2024/25	-20	0	-3	0	0	0	-3	0
2025/26	9	0	-21	0	0	0	-21	0
<b>Uzbekistan</b>								
2025/26	-55	0	895	50	-5	1,000	0	-50
<b>Venezuela</b>								
2023/24	0	0	0	-6	0	-7	0	1
2024/25	0	1	0	-1	0	-1	0	1
2025/26	0	1	0	0	0	0	0	1
<b>Vietnam</b>								
2025/26	0	0	0	-200	0	-100	0	-100
<b>Zambia</b>								
2025/26	0	0	0	0	-25	0	0	25
<b>World</b>								
<b>World</b>								
2022/23	0	0	0	0	1	-1	0	0
2023/24	0	0	0	-5	3	-156	0	148
2024/25	-20	148	-3	-4	27	-333	-3	450
2025/26	-95	450	769	32	52	997	-21	223

**Table 01 Cotton World Supply, Use, and Trade (Season Beginning August 1)**  
(1000 MT)

	2021/22	2022/23	2023/24	2024/25	2025/26	May 2026/27
<b>Production</b>						
China	5,813	6,695	5,955	6,967	7,795	7,294
India	5,291	5,726	5,530	5,225	5,182	5,225
Brazil	2,356	2,552	3,172	3,701	4,246	3,810
United States	3,815	3,150	2,627	3,137	3,026	2,896
Pakistan	1,306	849	1,524	1,089	1,154	1,110
Uzbekistan	624	696	631	653	750	718
Australia	1,274	1,263	1,089	1,219	980	653
Other	4,415	4,308	3,908	3,991	3,570	3,559
<b>Total</b>	<b>24,894</b>	<b>25,239</b>	<b>24,436</b>	<b>25,984</b>	<b>26,702</b>	<b>25,266</b>
<b>Domestic Use</b>						
China	7,272	8,208	8,470	8,491	8,818	8,927
India	5,443	5,334	5,552	5,552	5,552	5,661
Pakistan	2,330	1,894	2,112	2,308	2,243	2,264
Bangladesh	1,916	1,676	1,687	1,785	1,698	1,742
Vietnam	1,459	1,404	1,437	1,742	1,676	1,698
Turkey	1,872	1,633	1,437	1,546	1,481	1,481
Uzbekistan	708	572	642	653	871	871
Other	4,193	3,816	3,665	3,855	3,817	3,851
<b>Total</b>	<b>25,193</b>	<b>24,538</b>	<b>25,002</b>	<b>25,933</b>	<b>26,156</b>	<b>26,495</b>
<b>Imports</b>						
Vietnam	1,444	1,409	1,434	1,737	1,655	1,742
Bangladesh	1,840	1,524	1,649	1,753	1,676	1,698
China	1,694	1,357	3,259	1,129	1,437	1,524
Pakistan	980	980	697	1,328	1,045	1,154
Turkey	1,203	912	776	971	980	1,045
India	218	376	193	662	914	435
Indonesia	561	362	402	431	414	414
Other	1,405	1,297	1,179	1,358	1,411	1,430
<b>Total</b>	<b>9,344</b>	<b>8,217</b>	<b>9,590</b>	<b>9,369</b>	<b>9,532</b>	<b>9,443</b>
<b>Exports</b>						
Brazil	1,682	1,449	2,680	2,835	3,201	3,266
United States	3,059	2,711	2,558	2,591	2,613	2,678
Australia	778	1,347	1,255	1,135	1,241	980
India	815	239	503	288	218	327
Benin	388	239	229	250	250	250
Greece	310	290	212	234	196	196
Mali	283	163	256	266	196	196
Other	1,975	1,520	1,901	1,638	1,617	1,545
<b>Total</b>	<b>9,290</b>	<b>7,959</b>	<b>9,594</b>	<b>9,237</b>	<b>9,531</b>	<b>9,437</b>
<b>Ending Stocks</b>						
China	7,439	7,262	7,993	7,585	7,982	7,857
India	1,828	2,357	2,025	2,072	2,398	2,072
Brazil	446	855	647	805	1,122	927
United States	1,002	1,012	686	871	958	849
Argentina	339	400	475	529	486	520
Australia	1,088	1,047	919	1,045	818	513
Pakistan	419	332	403	501	446	435
Other	2,939	3,251	2,844	2,817	2,612	2,468
<b>Total</b>	<b>15,500</b>	<b>16,517</b>	<b>15,992</b>	<b>16,224</b>	<b>16,823</b>	<b>15,642</b>

**Table 02 Cotton World Supply, Use, and Trade (Season Beginning August 1)**  
(1000 Bales)

	2021/22	2022/23	2023/24	2024/25	2025/26	May 2026/27
<b>Production</b>						
China	26,700	30,750	27,350	32,000	35,800	33,500
India	24,300	26,300	25,400	24,000	23,800	24,000
Brazil	10,820	11,720	14,570	17,000	19,500	17,500
United States	17,523	14,468	12,066	14,410	13,897	13,300
Pakistan	6,000	3,900	7,000	5,000	5,300	5,100
Uzbekistan	2,865	3,195	2,900	3,000	3,445	3,300
Australia	5,850	5,800	5,000	5,600	4,500	3,000
Other	20,277	19,786	17,948	18,331	16,399	16,344
<b>Total</b>	<b>114,335</b>	<b>115,919</b>	<b>112,234</b>	<b>119,341</b>	<b>122,641</b>	<b>116,044</b>
<b>Domestic Use</b>						
China	33,400	37,700	38,900	39,000	40,500	41,000
India	25,000	24,500	25,500	25,500	25,500	26,000
Pakistan	10,700	8,700	9,700	10,600	10,300	10,400
Bangladesh	8,800	7,700	7,750	8,200	7,800	8,000
Vietnam	6,700	6,450	6,600	8,000	7,700	7,800
Turkey	8,600	7,500	6,600	7,100	6,800	6,800
Uzbekistan	3,250	2,625	2,950	3,000	4,000	4,000
Brazil	3,186	3,194	3,221	3,259	3,350	3,400
Indonesia	2,600	1,750	1,800	1,950	1,900	1,900
United States	2,550	2,050	1,850	1,700	1,600	1,600
Other	10,922	10,531	9,960	10,798	10,683	10,788
<b>Total</b>	<b>115,708</b>	<b>112,700</b>	<b>114,831</b>	<b>119,107</b>	<b>120,133</b>	<b>121,688</b>
<b>Imports</b>						
Vietnam	6,631	6,471	6,585	7,979	7,600	8,000
Bangladesh	8,450	7,000	7,575	8,050	7,700	7,800
China	7,782	6,232	14,970	5,185	6,600	7,000
Pakistan	4,500	4,500	3,200	6,100	4,800	5,300
Turkey	5,524	4,189	3,566	4,459	4,500	4,800
India	1,000	1,727	885	3,041	4,200	2,000
Indonesia	2,577	1,664	1,848	1,978	1,900	1,900
Egypt	450	500	550	1,000	1,100	1,200
Malaysia	444	687	730	735	700	700
Mexico	959	689	695	600	650	650
Other	4,600	4,079	3,441	3,904	4,030	4,019
<b>Total</b>	<b>42,917</b>	<b>37,738</b>	<b>44,045</b>	<b>43,031</b>	<b>43,780</b>	<b>43,369</b>
<b>Exports</b>						
Brazil	7,727	6,656	12,310	13,021	14,700	15,000
United States	14,050	12,450	11,750	11,900	12,000	12,300
Australia	3,571	6,186	5,764	5,213	5,700	4,500
India	3,743	1,099	2,310	1,325	1,000	1,500
Benin	1,780	1,100	1,050	1,150	1,150	1,150
Greece	1,426	1,330	973	1,074	900	900
Mali	1,300	750	1,175	1,220	900	900
Burkina Faso	950	750	750	525	600	625
Cote d'Ivoire	1,343	479	542	546	550	600
Turkey	567	860	1,385	1,433	900	600
Other	6,209	4,894	6,056	5,019	5,376	5,269
<b>Total</b>	<b>42,666</b>	<b>36,554</b>	<b>44,065</b>	<b>42,426</b>	<b>43,776</b>	<b>43,344</b>
<b>Ending Stocks</b>						
China	34,167	33,355	36,713	34,837	36,662	36,087
India	8,396	10,824	9,299	9,515	11,015	9,515
Brazil	2,050	3,928	2,973	3,697	5,152	4,257
United States	4,600	4,650	3,150	4,000	4,400	3,900
Argentina	1,557	1,836	2,180	2,428	2,233	2,388
Australia	4,996	4,810	4,221	4,798	3,758	2,358
Pakistan	1,925	1,525	1,850	2,300	2,050	2,000
Other	13,500	14,931	13,063	12,940	11,995	11,336
<b>Total</b>	<b>71,191</b>	<b>75,859</b>	<b>73,449</b>	<b>74,515</b>	<b>77,265</b>	<b>71,841</b>

**Table 04 Cotton Area, Yield, and Production**

Country / Region	Area (Million hectares)			Yield (Kilograms per hectare)			Production (Million 480 lb. bales)			Change in Production			
	2024/25	Prel. 2025/26	2026/27 Proj. May	2024/25	Prel. 2025/26	2026/27 Proj. May	2024/25	Prel. 2025/26	2026/27 Proj. May	From last month MBales	Percent	From last year MBales	Percent
<b>World</b>	30.02	29.42	29.24	866	907	864	119.34	122.64	116.04			-6.60	-5.38
<b>United States</b>	3.14	3.17	2.99	1,000	955	970	14.41	13.90	13.30			-0.60	-4.30
<b>Total Foreign</b>	26.88	26.26	26.26	850	902	852	104.93	108.74	102.74			-6.00	-5.52
<b>Western Hemisphere</b>													
Brazil	1.95	2.17	2.00	1,903	1,957	1,905	17.00	19.50	17.50			-2.00	-10.26
Mexico	0.13	0.07	0.08	1,719	1,709	1,769	1.00	0.57	0.65			0.09	15.04
Argentina	0.62	0.38	0.52	501	610	586	1.43	1.05	1.40			0.35	33.33
Paraguay	0.07	0.06	0.07	837	907	933	0.25	0.25	0.30			0.05	20.00
Peru	0.01	0.01	0.01	871	980	980	0.04	0.05	0.05			0.00	0.00
Colombia	0.01	0.01	0.01	1,005	990	998	0.06	0.05	0.06			0.01	10.00
<b>Africa</b>													
Burkina Faso	0.35	0.39	0.39	345	355	355	0.55	0.64	0.64			0.00	0.00
Mali	0.62	0.53	0.54	442	334	381	1.27	0.82	0.94			0.12	14.02
Cote d'Ivoire	0.36	0.29	0.31	360	424	414	0.59	0.57	0.59			0.03	4.42
Cameroon	0.23	0.20	0.20	513	577	577	0.54	0.53	0.53			0.00	0.00
Benin	0.54	0.51	0.51	487	491	491	1.20	1.15	1.15			0.00	0.00
Chad	0.14	0.15	0.15	176	203	203	0.11	0.14	0.14			0.00	0.00
Togo	0.08	0.08	0.07	327	290	311	0.11	0.10	0.10			0.00	0.00
Senegal	0.01	0.02	0.02	526	533	435	0.03	0.05	0.04			-0.01	-18.37
Egypt	0.13	0.08	0.10	712	708	710	0.43	0.26	0.31			0.05	19.23
Zimbabwe	0.24	0.24	0.24	195	204	204	0.22	0.23	0.23			0.00	0.00
Nigeria	0.27	0.27	0.27	282	282	282	0.35	0.35	0.35			0.00	0.00
<b>Asia Oceania</b>													
China	2.90	3.05	3.00	2,402	2,556	2,431	32.00	35.80	33.50			-2.30	-6.42
India	11.48	11.20	11.50	455	463	454	24.00	23.80	24.00			0.20	0.84
Pakistan	2.00	2.00	2.00	544	577	555	5.00	5.30	5.10			-0.20	-3.77
Kazakhstan	0.11	0.15	0.13	544	522	523	0.27	0.35	0.30			-0.05	-14.29
Tajikistan	0.18	0.18	0.18	605	641	635	0.50	0.53	0.51			-0.02	-3.77
Turkmenistan	0.50	0.52	0.50	348	356	348	0.80	0.85	0.80			-0.05	-5.88
Uzbekistan	1.00	0.88	0.90	653	857	798	3.00	3.45	3.30			-0.15	-4.21
Turkey	0.47	0.40	0.31	1,850	1,683	1,756	3.95	3.05	2.50			-0.55	-18.14
Australia	0.60	0.47	0.33	2,032	2,085	2,010	5.60	4.50	3.00			-1.50	-33.33
Syria	0.03	0.03	0.03	1,161	1,161	1,161	0.16	0.16	0.16			0.00	0.00
Burma	0.19	0.19	0.19	654	659	659	0.57	0.56	0.56			0.00	0.00
<b>Europe</b>													
Greece	0.22	0.20	0.19	1,050	1,110	1,146	1.08	1.02	1.00			-0.02	-1.96
<b>Others</b>	1.47	1.55	1.53	422	435	434	2.84	3.09	3.06			-0.03	-1.04

**Table 05 Cotton Supply and Distribution MY 2026/27**  
**(1,000 HA and 1000 480-lb. Bales)**

Country	Area Harvested	Production	Imports	Total Supply	Domestic Use	Loss	Exports	Ending Stocks
Afghanistan	180	375	0	460	15	0	375	70
Albania	1	1	0	2	1	0	0	1
Algeria	0	0	70	89	70	0	0	19
Angola	3	5	0	10	5	0	0	5
Argentina	520	1,400	5	3,638	750	0	500	2,388
Armenia	0	0	1	1	1	0	0	0
Australia	325	3,000	0	6,758	0	-100	4,500	2,358
Austria	0	0	1	1	1	0	0	0
Azerbaijan	100	475	0	552	40	0	425	87
Bahrain	0	0	30	35	30	0	0	5
Bangladesh	45	153	7,800	9,720	8,000	0	0	1,720
Belarus	0	0	10	13	10	0	0	3
Belgium-Luxembourg	0	0	10	14	9	0	1	4
Benin	510	1,150	0	1,278	25	0	1,150	103
Bolivia	4	10	0	14	10	0	0	4
Bosnia and Herzegovina	0	0	5	6	5	0	0	1
Brazil	2,000	17,500	5	22,657	3,400	0	15,000	4,257
Bulgaria	2	10	10	25	20	0	0	5
Burkina Faso	390	635	0	721	15	0	625	81
Burma	185	560	0	738	525	0	50	163
Cambodia	0	0	1	2	1	0	0	1
Cameroon	200	530	0	759	20	0	525	214
Canada	0	0	1	1	1	0	0	0
Central African Republic	34	36	0	53	0	0	36	17
Chad	150	140	0	230	10	0	125	95
Chile	0	0	1	2	1	0	0	1
China	3,000	33,500	7,000	77,162	41,000	0	75	36,087
Colombia	12	55	40	115	95	0	0	20
Congo (Kinshasa)	30	15	2	21	17	0	0	4
Costa Rica	0	0	75	89	75	0	0	14
Cote d'Ivoire	310	590	0	848	10	0	600	238
Croatia	0	0	1	1	1	0	0	0
Cuba	4	4	3	9	7	0	0	2
Cyprus	0	0	1	1	1	0	0	0
Czech Republic	0	0	5	6	5	0	0	1

**Table 05 Cotton Supply and Distribution MY 2026/27 (Continued)**  
**(1,000 HA and 1000 480-lb. Bales)**

Country	Area Harvested	Production	Imports	Total Supply	Domestic Use	Loss	Exports	Ending Stocks
Denmark	0	0	0	0	0	0	0	0
Dominican Republic	0	0	1	2	1	0	0	1
Ecuador	1	1	25	35	25	0	0	10
Egypt	95	310	1,200	1,802	1,300	0	200	302
El Salvador	0	0	200	241	200	0	0	41
Estonia	0	0	15	19	15	0	0	4
Ethiopia	55	180	0	263	175	0	5	83
France	0	0	35	44	35	0	2	7
Germany	0	0	60	72	55	0	3	14
Ghana	15	28	0	35	15	0	10	10
Greece	190	1,000	15	1,178	70	0	900	208
Guatemala	0	0	250	307	250	0	0	57
Guinea	13	18	0	21	0	0	18	3
Haiti	7	5	0	6	5	0	0	1
Honduras	0	0	300	347	300	0	0	47
Hong Kong	0	0	0	0	0	0	0	0
Hungary	0	0	2	7	0	0	2	5
India	11,500	24,000	2,000	37,015	26,000	0	1,500	9,515
Indonesia	1	2	1,900	2,297	1,900	0	15	382
Iran	100	400	500	1,111	900	0	0	211
Iraq	10	15	20	45	35	0	0	10
Ireland	0	0	1	1	1	0	0	0
Israel	8	65	1	151	1	0	60	90
Italy	0	0	100	116	90	0	5	21
Japan	0	0	130	148	130	0	0	18
Kazakhstan	125	300	0	451	20	0	350	81
Kenya	10	5	30	45	35	0	0	10
Korea, North	19	55	15	85	70	0	0	15
Korea, South	0	0	300	377	300	0	5	72
Kyrgyzstan	18	70	0	112	0	0	70	42
Latvia	0	0	7	8	7	0	0	1
Lebanon	0	0	1	2	1	0	0	1
Lesotho	0	0	70	85	70	0	0	15
Lithuania	0	0	1	1	1	0	0	0
North Macedonia	0	0	2	3	2	0	0	1

**Table 05 Cotton Supply and Distribution MY 2026/27 (Continued)**  
**(1,000 HA and 1000 480-lb. Bales)**

Country	Area Harvested	Production	Imports	Total Supply	Domestic Use	Loss	Exports	Ending Stocks
Madagascar	20	30	0	45	20	0	10	15
Malawi	30	37	0	58	15	0	25	18
Malaysia	0	0	700	1,301	700	0	35	566
Mali	535	935	0	1,239	25	0	900	314
Mauritius	0	0	75	89	75	0	0	14
Mexico	80	650	650	1,507	1,200	0	100	207
Moldova	0	0	20	25	20	0	0	5
Morocco	0	0	10	14	10	0	0	4
Mozambique	125	115	0	191	5	0	110	76
Netherlands	0	0	5	7	5	0	0	2
Nicaragua	0	0	100	132	100	0	0	32
Niger	5	9	0	14	0	0	9	5
Nigeria	270	350	0	459	250	0	100	109
Norway	0	0	0	0	0	0	0	0
Pakistan	2,000	5,100	5,300	12,450	10,400	0	50	2,000
Panama	0	0	1	1	1	0	0	0
Paraguay	70	300	0	610	75	0	200	335
Peru	10	45	250	327	275	0	3	49
Philippines	1	2	20	25	22	0	0	3
Poland	0	0	30	34	30	0	0	4
Portugal	0	0	125	145	110	0	15	20
Romania	0	0	1	2	1	0	0	1
Russia	0	0	90	106	85	0	5	16
Senegal	20	40	0	53	2	0	40	11
Serbia	0	0	5	6	5	0	0	1
Singapore	0	0	0	0	0	0	0	0
Slovakia	0	0	1	1	1	0	0	0
Slovenia	0	0	5	6	5	0	0	1
Somalia	12	7	3	11	10	0	0	1
South Africa	15	65	70	169	80	0	65	24
Spain	55	190	15	219	15	0	190	14
Sri Lanka	5	5	1	8	6	0	0	2
Sudan	70	150	0	179	10	0	125	44
Sweden	0	0	0	0	0	0	0	0
Switzerland	0	0	1	2	1	0	0	1

**Table 05 Cotton Supply and Distribution MY 2026/27 (Continued)**  
**(1,000 HA and 1000 480-lb. Bales)**

<b>Country</b>	<b>Area Harvested</b>	<b>Production</b>	<b>Imports</b>	<b>Total Supply</b>	<b>Domestic Use</b>	<b>Loss</b>	<b>Exports</b>	<b>Ending Stocks</b>
Syria	30	160	0	209	50	0	125	34
Taiwan	0	0	100	119	100	0	5	14
Tajikistan	175	510	0	659	125	0	400	134
Tanzania	420	365	0	604	150	0	225	229
Thailand	1	2	450	561	450	0	0	111
Togo	70	100	0	201	0	0	100	101
Tunisia	0	0	15	17	15	0	0	2
Turkey	310	2,500	4,800	8,432	6,800	0	600	1,032
Turkmenistan	500	800	0	1,114	750	0	150	214
Uganda	65	90	0	185	15	0	75	95
Ukraine	0	0	1	1	1	0	0	0
United Kingdom	0	0	2	3	2	0	0	1
United States	2,985	13,300	5	17,705	1,600	-95	12,300	3,900
Uruguay	0	0	0	0	0	0	0	0
Uzbekistan	900	3,300	250	5,280	4,000	0	0	1,280
Venezuela	4	8	10	22	18	0	0	4
Vietnam	1	3	8,000	8,922	7,800	0	0	1,122
Yemen	5	8	0	10	8	0	0	2
Zambia	40	45	0	184	5	0	50	129
Zimbabwe	240	225	0	552	55	0	200	297
<b>World</b>								
World	29,241	116,044	43,369	236,678	121,688	-195	43,344	71,841

**Table 05A Cotton Supply and Distribution MY 2026/27**  
(1000 MT and 1000 HA)

Country	Area Harvested	Production	Imports	Total Supply	Domestic Use	Loss	Exports	Ending Stocks
Afghanistan	180	82	0	100	3	0	82	15
Albania	1	0	0	0	0	0	0	0
Algeria	0	0	15	19	15	0	0	4
Angola	3	1	0	2	1	0	0	1
Argentina	520	305	1	792	163	0	109	520
Armenia	0	0	0	0	0	0	0	0
Australia	325	653	0	1,471	0	-22	980	513
Austria	0	0	0	0	0	0	0	0
Azerbaijan	100	103	0	120	9	0	93	19
Bahrain	0	0	7	8	7	0	0	1
Bangladesh	45	33	1,698	2,116	1,742	0	0	374
Belarus	0	0	2	3	2	0	0	1
Belgium-Luxembourg	0	0	2	3	2	0	0	1
Benin	510	250	0	278	5	0	250	22
Bolivia	4	2	0	3	2	0	0	1
Bosnia and Herzegovina	0	0	1	1	1	0	0	0
Brazil	2,000	3,810	1	4,933	740	0	3,266	927
Bulgaria	2	2	2	5	4	0	0	1
Burkina Faso	390	138	0	157	3	0	136	18
Burma	185	122	0	161	114	0	11	35
Cambodia	0	0	0	0	0	0	0	0
Cameroon	200	115	0	165	4	0	114	47
Canada	0	0	0	0	0	0	0	0
Central African Republic	34	8	0	12	0	0	8	4
Chad	150	30	0	50	2	0	27	21
Chile	0	0	0	0	0	0	0	0
China	3,000	7,294	1,524	16,800	8,927	0	16	7,857
Colombia	12	12	9	25	21	0	0	4
Congo (Kinshasa)	30	3	0	5	4	0	0	1
Costa Rica	0	0	16	19	16	0	0	3
Cote d'Ivoire	310	128	0	185	2	0	131	52
Croatia	0	0	0	0	0	0	0	0
Cuba	4	1	1	2	2	0	0	0
Cyprus	0	0	0	0	0	0	0	0
Czech Republic	0	0	1	1	1	0	0	0

**Table 05A Cotton Supply and Distribution MY 2026/27 (Continued)**  
(1000 MT and 1000 HA)

Country	Area Harvested	Production	Imports	Total Supply	Domestic Use	Loss	Exports	Ending Stocks
Denmark	0	0	0	0	0	0	0	0
Dominican Republic	0	0	0	0	0	0	0	0
Ecuador	1	0	5	8	5	0	0	2
Egypt	95	67	261	392	283	0	44	66
El Salvador	0	0	44	52	44	0	0	9
Estonia	0	0	3	4	3	0	0	1
Ethiopia	55	39	0	57	38	0	1	18
France	0	0	8	10	8	0	0	2
Germany	0	0	13	16	12	0	1	3
Ghana	15	6	0	8	3	0	2	2
Greece	190	218	3	256	15	0	196	45
Guatemala	0	0	54	67	54	0	0	12
Guinea	13	4	0	5	0	0	4	1
Haiti	7	1	0	1	1	0	0	0
Honduras	0	0	65	76	65	0	0	10
Hong Kong	0	0	0	0	0	0	0	0
Hungary	0	0	0	2	0	0	0	1
India	11,500	5,225	435	8,059	5,661	0	327	2,072
Indonesia	1	0	414	500	414	0	3	83
Iran	100	87	109	242	196	0	0	46
Iraq	10	3	4	10	8	0	0	2
Ireland	0	0	0	0	0	0	0	0
Israel	8	14	0	33	0	0	13	20
Italy	0	0	22	25	20	0	1	5
Japan	0	0	28	32	28	0	0	4
Kazakhstan	125	65	0	98	4	0	76	18
Kenya	10	1	7	10	8	0	0	2
Korea, North	19	12	3	19	15	0	0	3
Korea, South	0	0	65	82	65	0	1	16
Kyrgyzstan	18	15	0	24	0	0	15	9
Latvia	0	0	2	2	2	0	0	0
Lebanon	0	0	0	0	0	0	0	0
Lesotho	0	0	15	19	15	0	0	3
Lithuania	0	0	0	0	0	0	0	0
North Macedonia	0	0	0	1	0	0	0	0



**Table 05A Cotton Supply and Distribution MY 2026/27 (Continued)**  
(1000 MT and 1000 HA)

Country	Area Harvested	Production	Imports	Total Supply	Domestic Use	Loss	Exports	Ending Stocks
Syria	30	35	0	46	11	0	27	7
Taiwan	0	0	22	26	22	0	1	3
Tajikistan	175	111	0	143	27	0	87	29
Tanzania	420	79	0	132	33	0	49	50
Thailand	1	0	98	122	98	0	0	24
Togo	70	22	0	44	0	0	22	22
Tunisia	0	0	3	4	3	0	0	0
Turkey	310	544	1,045	1,836	1,481	0	131	225
Turkmenistan	500	174	0	243	163	0	33	47
Uganda	65	20	0	40	3	0	16	21
Ukraine	0	0	0	0	0	0	0	0
United Kingdom	0	0	0	1	0	0	0	0
United States	2,985	2,896	1	3,855	348	-21	2,678	849
Uruguay	0	0	0	0	0	0	0	0
Uzbekistan	900	718	54	1,150	871	0	0	279
Venezuela	4	2	2	5	4	0	0	1
Vietnam	1	1	1,742	1,943	1,698	0	0	244
Yemen	5	2	0	2	2	0	0	0
Zambia	40	10	0	40	1	0	11	28
Zimbabwe	240	49	0	120	12	0	44	65
<b>World</b>								
World	29,241	25,266	9,443	51,531	26,495	-42	9,437	15,642

**Table 06: Cotton Supply and Distribution by Country 2025/26**  
(1,000 HA and 1000 480-lb. Bales)

Country	Area Harvested	Production	Imports	Total Supply	Domestic Use	Loss	Exports	Ending Stocks
Afghanistan	180	375	0	400	15	0	300	85
Albania	1	1	0	2	1	0	0	1
Algeria	0	0	70	89	70	0	0	19
Angola	3	5	0	10	5	0	0	5
Argentina	375	1,050	5	3,483	750	0	500	2,233
Armenia	0	0	1	1	1	0	0	0
Australia	470	4,500	0	9,298	0	-160	5,700	3,758
Austria	0	0	1	1	1	0	0	0
Azerbaijan	100	475	0	542	40	0	425	77
Bahrain	0	0	30	35	30	0	0	5
Bangladesh	45	153	7,700	9,567	7,800	0	0	1,767
Belarus	0	0	10	13	10	0	0	3
Belgium-Luxembourg	0	0	10	14	9	0	1	4
Benin	510	1,150	0	1,303	25	0	1,150	128
Bolivia	4	11	1	16	12	0	0	4
Bosnia and Herzegovina	0	0	5	6	5	0	0	1
Brazil	2,170	19,500	5	23,202	3,350	0	14,700	5,152
Bulgaria	2	10	10	25	20	0	0	5
Burkina Faso	390	635	0	701	15	0	600	86
Burma	185	560	0	728	500	0	50	178
Cambodia	0	0	1	2	1	0	0	1
Cameroon	200	530	0	774	20	0	525	229
Canada	0	0	1	1	1	0	0	0
Central African Republic	34	36	0	53	0	0	36	17
Chad	150	140	0	250	10	0	150	90
Chile	0	0	1	2	1	0	0	1
China	3,050	35,800	6,600	77,237	40,500	0	75	36,662
Colombia	11	50	40	110	90	0	0	20
Congo (Kinshasa)	30	15	2	21	17	0	0	4
Costa Rica	0	0	75	89	75	0	0	14
Cote d'Ivoire	290	565	0	818	10	0	550	258
Croatia	0	0	1	1	1	0	0	0
Cuba	4	4	3	9	7	0	0	2
Cyprus	0	0	1	1	1	0	0	0
Czech Republic	0	0	5	6	5	0	0	1

**Table 06: Cotton Supply and Distribution by Country 2025/26 (Continued)**  
**(1,000 HA and 1000 480-lb. Bales)**

Country	Area Harvested	Production	Imports	Total Supply	Domestic Use	Loss	Exports	Ending Stocks
Denmark	0	0	0	0	0	0	0	0
Dominican Republic	0	0	1	2	1	0	0	1
Ecuador	1	1	30	39	30	0	0	9
Egypt	80	260	1,100	1,742	1,200	0	250	292
El Salvador	0	0	200	243	200	0	2	41
Estonia	0	0	15	19	15	0	0	4
Ethiopia	55	180	0	263	175	0	5	83
France	0	0	40	48	37	0	2	9
Germany	0	0	60	70	55	0	3	12
Ghana	15	28	0	32	15	0	10	7
Greece	200	1,020	15	1,133	70	0	900	163
Guatemala	0	0	250	307	250	0	0	57
Guinea	13	18	0	21	0	0	18	3
Haiti	7	5	0	6	5	0	0	1
Honduras	0	0	300	347	300	0	0	47
Hong Kong	0	0	0	0	0	0	0	0
Hungary	0	0	2	7	0	0	2	5
India	11,200	23,800	4,200	37,515	25,500	0	1,000	11,015
Indonesia	1	2	1,900	2,310	1,900	0	15	395
Iran	100	400	500	1,111	900	0	0	211
Iraq	10	15	20	45	35	0	0	10
Ireland	0	0	1	1	1	0	0	0
Israel	8	65	1	136	1	0	50	85
Italy	0	0	100	111	90	0	5	16
Japan	0	0	130	148	130	0	0	18
Kazakhstan	146	350	0	571	20	0	400	151
Kenya	10	5	30	45	35	0	0	10
Korea, North	19	55	15	85	70	0	0	15
Korea, South	0	0	300	382	300	0	5	77
Kyrgyzstan	20	80	0	102	0	0	60	42
Latvia	0	0	7	8	7	0	0	1
Lebanon	0	0	1	2	1	0	0	1
Lesotho	0	0	70	85	70	0	0	15
Lithuania	0	0	1	1	1	0	0	0
North Macedonia	0	0	2	3	2	0	0	1

**Table 06: Cotton Supply and Distribution by Country 2025/26 (Continued)**  
**(1,000 HA and 1000 480-lb. Bales)**

Country	Area Harvested	Production	Imports	Total Supply	Domestic Use	Loss	Exports	Ending Stocks
Madagascar	20	30	0	45	20	0	10	15
Malawi	30	37	0	61	15	0	25	21
Malaysia	0	0	700	1,336	700	0	35	601
Mali	534	820	0	1,229	25	0	900	304
Mauritius	0	0	75	89	75	0	0	14
Mexico	72	565	650	1,527	1,200	20	100	207
Moldova	0	0	20	25	20	0	0	5
Morocco	0	0	10	14	10	0	0	4
Mozambique	125	115	0	191	5	0	110	76
Netherlands	0	0	5	7	5	0	0	2
Nicaragua	0	0	100	122	90	0	0	32
Niger	5	9	0	14	0	0	9	5
Nigeria	270	350	0	459	250	0	100	109
Norway	0	0	0	0	0	0	0	0
Pakistan	2,000	5,300	4,800	12,400	10,300	0	50	2,050
Panama	0	0	1	1	1	0	0	0
Paraguay	60	250	0	510	75	0	125	310
Peru	10	45	225	310	275	0	3	32
Philippines	1	2	20	26	23	0	0	3
Poland	0	0	30	34	30	0	0	4
Portugal	0	0	125	145	110	0	15	20
Romania	0	0	1	2	1	0	0	1
Russia	0	0	90	106	85	0	5	16
Senegal	20	49	0	60	2	0	45	13
Serbia	0	0	5	6	5	0	0	1
Singapore	0	0	0	0	0	0	0	0
Slovakia	0	0	1	1	1	0	0	0
Slovenia	0	0	5	6	5	0	0	1
Somalia	12	7	3	11	10	0	0	1
South Africa	15	75	70	189	80	0	75	34
Spain	47	166	15	199	15	0	170	14
Sri Lanka	5	5	1	8	6	0	0	2
Sudan	70	150	0	239	10	0	200	29
Sweden	0	0	0	0	0	0	0	0
Switzerland	0	0	1	2	1	0	0	1

**Table 06: Cotton Supply and Distribution by Country 2025/26 (Continued)**  
**(1,000 HA and 1000 480-lb. Bales)**

Country	Area Harvested	Production	Imports	Total Supply	Domestic Use	Loss	Exports	Ending Stocks
Syria	30	160	0	224	50	0	125	49
Taiwan	0	0	100	124	100	0	5	19
Tajikistan	180	530	0	674	125	0	400	149
Tanzania	440	400	0	664	150	0	275	239
Thailand	1	2	475	584	475	0	0	109
Togo	75	100	0	201	0	0	100	101
Tunisia	0	0	15	17	15	0	0	2
Turkey	395	3,054	4,500	8,832	6,800	0	900	1,132
Turkmenistan	520	850	0	1,264	750	0	200	314
Uganda	65	90	0	185	15	0	75	95
Ukraine	0	0	1	1	1	0	0	0
United Kingdom	0	0	2	3	2	0	0	1
United States	3,168	13,897	5	17,902	1,600	-98	12,000	4,400
Uruguay	0	0	0	0	0	0	0	0
Uzbekistan	875	3,445	250	5,735	4,000	0	5	1,730
Venezuela	4	8	10	22	18	0	0	4
Vietnam	1	3	7,600	8,619	7,700	0	0	919
Yemen	5	8	0	10	8	0	0	2
Zambia	40	45	0	169	5	0	25	139
Zimbabwe	240	225	0	582	55	0	200	327
<b>World</b>								
World	29,424	122,641	43,780	240,936	120,133	-238	43,776	77,265

**Table 06A: Cotton Supply and Distribution by Country 2025/26**  
(1,000 Metric Tons)

Country	Area Harvested	Production	Imports	Domestic Use	Loss	Exports	Ending Stocks
Afghanistan	180	82	0	3	0	65	19
Albania	1	0	0	0	0	0	0
Algeria	0	0	15	15	0	0	4
Angola	3	1	0	1	0	0	1
Argentina	375	229	1	163	0	109	486
Armenia	0	0	0	0	0	0	0
Australia	470	980	0	0	-35	1,241	818
Austria	0	0	0	0	0	0	0
Azerbaijan	100	103	0	9	0	93	17
Bahrain	0	0	7	7	0	0	1
Bangladesh	45	33	1,676	1,698	0	0	385
Belarus	0	0	2	2	0	0	1
Belgium-Luxembourg	0	0	2	2	0	0	1
Benin	510	250	0	5	0	250	28
Bolivia	4	2	0	3	0	0	1
Bosnia and Herzegovina	0	0	1	1	0	0	0
Brazil	2,170	4,246	1	729	0	3,201	1,122
Bulgaria	2	2	2	4	0	0	1
Burkina Faso	390	138	0	3	0	131	19
Burma	185	122	0	109	0	11	39
Cambodia	0	0	0	0	0	0	0
Cameroon	200	115	0	4	0	114	50
Canada	0	0	0	0	0	0	0
Central African Republic	34	8	0	0	0	8	4
Chad	150	30	0	2	0	33	20
Chile	0	0	0	0	0	0	0
China	3,050	7,795	1,437	8,818	0	16	7,982
Colombia	11	11	9	20	0	0	4
Congo (Kinshasa)	30	3	0	4	0	0	1
Costa Rica	0	0	16	16	0	0	3
Cote d'Ivoire	290	123	0	2	0	120	56
Croatia	0	0	0	0	0	0	0
Cuba	4	1	1	2	0	0	0
Cyprus	0	0	0	0	0	0	0
Czech Republic	0	0	1	1	0	0	0

**Table 06A: Cotton Supply and Distribution by Country 2025/26 (Continued)**  
(1,000 Metric Tons)

Country	Area Harvested	Production	Imports	Domestic Use	Loss	Exports	Ending Stocks
Denmark	0	0	0	0	0	0	0
Dominican Republic	0	0	0	0	0	0	0
Ecuador	1	0	7	7	0	0	2
Egypt	80	57	239	261	0	54	64
El Salvador	0	0	44	44	0	0	9
Estonia	0	0	3	3	0	0	1
Ethiopia	55	39	0	38	0	1	18
France	0	0	9	8	0	0	2
Germany	0	0	13	12	0	1	3
Ghana	15	6	0	3	0	2	2
Greece	200	222	3	15	0	196	35
Guatemala	0	0	54	54	0	0	12
Guinea	13	4	0	0	0	4	1
Haiti	7	1	0	1	0	0	0
Honduras	0	0	65	65	0	0	10
Hong Kong	0	0	0	0	0	0	0
Hungary	0	0	0	0	0	0	1
India	11,200	5,182	914	5,552	0	218	2,398
Indonesia	1	0	414	414	0	3	86
Iran	100	87	109	196	0	0	46
Iraq	10	3	4	8	0	0	2
Ireland	0	0	0	0	0	0	0
Israel	8	14	0	0	0	11	19
Italy	0	0	22	20	0	1	3
Japan	0	0	28	28	0	0	4
Kazakhstan	146	76	0	4	0	87	33
Kenya	10	1	7	8	0	0	2
Korea, North	19	12	3	15	0	0	3
Korea, South	0	0	65	65	0	1	17
Kyrgyzstan	20	17	0	0	0	13	9
Latvia	0	0	2	2	0	0	0
Lebanon	0	0	0	0	0	0	0
Lesotho	0	0	15	15	0	0	3
Lithuania	0	0	0	0	0	0	0
North Macedonia	0	0	0	0	0	0	0

**Table 06A: Cotton Supply and Distribution by Country 2025/26 (Continued)**  
**(1,000 Metric Tons)**

Country	Area Harvested	Production	Imports	Domestic Use	Loss	Exports	Ending Stocks
Madagascar	20	7	0	4	0	2	3
Malawi	30	8	0	3	0	5	5
Malaysia	0	0	152	152	0	8	131
Mali	534	179	0	5	0	196	66
Mauritius	0	0	16	16	0	0	3
Mexico	72	123	142	261	4	22	45
Moldova	0	0	4	4	0	0	1
Morocco	0	0	2	2	0	0	1
Mozambique	125	25	0	1	0	24	17
Netherlands	0	0	1	1	0	0	0
Nicaragua	0	0	22	20	0	0	7
Niger	5	2	0	0	0	2	1
Nigeria	270	76	0	54	0	22	24
Norway	0	0	0	0	0	0	0
Pakistan	2,000	1,154	1,045	2,243	0	11	446
Panama	0	0	0	0	0	0	0
Paraguay	60	54	0	16	0	27	67
Peru	10	10	49	60	0	1	7
Philippines	1	0	4	5	0	0	1
Poland	0	0	7	7	0	0	1
Portugal	0	0	27	24	0	3	4
Romania	0	0	0	0	0	0	0
Russia	0	0	20	19	0	1	3
Senegal	20	11	0	0	0	10	3
Serbia	0	0	1	1	0	0	0
Singapore	0	0	0	0	0	0	0
Slovakia	0	0	0	0	0	0	0
Slovenia	0	0	1	1	0	0	0
Somalia	12	2	1	2	0	0	0
South Africa	15	16	15	17	0	16	7
Spain	47	36	3	3	0	37	3
Sri Lanka	5	1	0	1	0	0	0
Sudan	70	33	0	2	0	44	6
Sweden	0	0	0	0	0	0	0
Switzerland	0	0	0	0	0	0	0

**Table 06A: Cotton Supply and Distribution by Country 2025/26 (Continued)**  
(1,000 Metric Tons)

Country	Area Harvested	Production	Imports	Domestic Use	Loss	Exports	Ending Stocks
Syria	30	35	0	11	0	27	11
Taiwan	0	0	22	22	0	1	4
Tajikistan	180	115	0	27	0	87	32
Tanzania	440	87	0	33	0	60	52
Thailand	1	0	103	103	0	0	24
Togo	75	22	0	0	0	22	22
Tunisia	0	0	3	3	0	0	0
Turkey	395	665	980	1,481	0	196	246
Turkmenistan	520	185	0	163	0	44	68
Uganda	65	20	0	3	0	16	21
Ukraine	0	0	0	0	0	0	0
United Kingdom	0	0	0	0	0	0	0
United States	3,168	3,026	1	348	-21	2,613	958
Uruguay	0	0	0	0	0	0	0
Uzbekistan	875	750	54	871	0	1	377
Venezuela	4	2	2	4	0	0	1
Vietnam	1	1	1,655	1,676	0	0	200
Yemen	5	2	0	2	0	0	0
Zambia	40	10	0	1	0	5	30
Zimbabwe	240	49	0	12	0	44	71
<b>World</b>							
World	29,424	26,702	9,532	26,156	-52	9,531	16,823

**Table 09: World Cotton Supply and Distribution**  
(1,000 HA and 1000 480-lb. Bales)

Country Mktg Year	Beginning Stocks	Area Harvested	Production	Imports	Total Supply	Exports	Domestic Use	Loss	Ending Stocks	Stock to Use %
<b>World</b>										
1995/96	31,996	35,913	93,656	26,994	152,646	27,296	85,853	-544	40,041	47
1996/97	40,041	33,763	89,814	28,564	158,419	26,602	87,851	-535	44,501	51
1997/98	44,501	33,772	92,074	25,909	162,484	26,777	87,070	-506	49,143	56
1998/99	49,143	32,871	85,820	24,460	159,423	23,507	84,358	-1,014	52,572	62
1999/00	52,572	32,341	87,743	27,968	168,283	27,126	90,534	-477	51,100	56
2000/01	51,100	31,945	88,449	26,182	165,731	26,156	91,713	-1,249	49,111	54
2001/02	49,111	33,783	99,275	29,266	177,652	29,081	94,269	-631	54,933	58
2002/03	54,933	30,727	90,630	30,151	175,714	30,400	98,293	-654	47,675	49
2003/04	47,675	31,895	94,388	34,119	176,182	33,072	98,034	-759	45,835	47
2004/05	45,835	35,581	121,521	33,939	201,295	34,949	109,007	-1,095	58,434	54
2005/06	58,434	35,026	117,388	44,649	220,471	44,922	116,448	-1,666	60,767	52
2006/07	60,767	34,324	120,400	38,285	219,452	37,416	123,925	-1,588	59,699	48
2007/08	59,699	32,883	119,665	39,451	218,815	38,868	123,890	-1,992	58,049	47
2008/09	58,049	30,834	109,865	30,534	198,448	30,207	110,628	-1,389	59,002	53
2009/10	59,002	30,188	103,171	36,931	199,104	35,805	119,584	20	43,695	37
2010/11	43,695	33,252	113,632	36,449	193,776	34,936	115,552	82	43,206	37
2011/12	43,206	36,000	127,634	45,432	216,272	46,005	103,914	-327	66,680	64
2012/13	66,680	34,757	126,301	47,479	240,460	46,372	107,745	-477	86,820	81
2013/14	86,820	32,558	118,608	41,436	246,864	41,290	109,240	-38	96,372	88
2014/15	96,372	33,942	120,031	36,528	252,931	36,264	112,825	208	103,634	92
2015/16	103,634	30,774	97,008	35,626	236,268	34,904	113,522	89	87,753	77
2016/17	87,753	29,780	105,100	37,760	230,613	38,083	116,532	-64	76,062	65
2017/18	76,062	33,171	121,598	41,336	238,996	41,562	122,932	-195	74,697	61
2018/19	74,697	32,414	113,732	42,374	230,803	41,336	118,905	-130	70,692	59
2019/20	70,692	34,090	118,206	40,725	229,623	40,810	105,198	-54	83,669	80
2020/21	83,669	31,304	113,261	48,578	245,508	48,463	124,468	-140	72,717	58
2021/22	72,717	32,001	114,335	42,917	229,969	42,666	115,708	404	71,191	62
2022/23	71,191	31,532	115,919	37,738	224,848	36,554	112,700	-265	75,859	67
2023/24	75,859	30,898	112,234	44,045	232,138	44,065	114,831	-207	73,449	64
2024/25	73,449	30,020	119,341	43,031	235,821	42,426	119,107	-227	74,515	63
2025/26	74,515	29,424	122,641	43,780	240,936	43,776	120,133	-238	77,265	64
2026/27	77,265	29,241	116,044	43,369	236,678	43,344	121,688	-195	71,841	59

**Table 10: United States Cotton Supply and Distribution**  
**(1,000 HA and 1000 480-lb. Bales)**

Country Mktg Year	Area Harvested	Yield	Beginning Stocks	Production	Imports	Total Supply	Exports	Domestic Use	Loss	Ending Stocks	Stock to Use %
<b>United States</b>											
1995/96	6,478	602	2,650	17,900	408	20,958	7,675	10,647	27	2,609	14
1996/97	5,216	791	2,609	18,942	403	21,954	6,865	11,126	-8	3,971	22
1997/98	5,425	754	3,971	18,793	13	22,777	7,500	11,349	41	3,887	21
1998/99	4,324	701	3,887	13,918	439	18,244	4,298	10,401	-394	3,939	27
1999/00	5,433	680	3,939	16,968	97	21,004	6,750	10,194	145	3,915	23
2000/01	5,282	708	3,915	17,188	16	21,119	6,740	8,862	-483	6,000	38
2001/02	5,596	790	6,000	20,303	21	26,324	11,000	7,696	180	7,448	40
2002/03	5,025	746	7,448	17,209	67	24,724	11,900	7,273	166	5,385	28
2003/04	4,858	818	5,385	18,255	45	23,685	13,758	6,266	211	3,450	17
2004/05	5,284	958	3,450	23,251	29	26,730	14,436	6,691	108	5,495	26
2005/06	5,586	931	5,495	23,890	28	29,413	17,673	5,871	-200	6,069	26
2006/07	5,152	912	6,069	21,588	19	27,676	12,959	4,935	303	9,479	53
2007/08	4,245	985	9,479	19,207	12	28,698	13,634	4,584	429	10,051	55
2008/09	3,063	912	10,051	12,825	0	22,876	13,261	3,541	-263	6,337	38
2009/10	3,049	870	6,337	12,183	0	18,520	12,037	3,550	-14	2,947	19
2010/11	4,330	910	2,947	18,102	9	21,058	14,376	3,900	182	2,600	14
2011/12	3,829	886	2,600	15,573	19	18,192	11,714	3,300	-172	3,350	22
2012/13	3,772	999	3,350	17,314	10	20,674	13,026	3,500	348	3,800	23
2013/14	3,051	921	3,800	12,909	13	16,722	10,530	3,550	292	2,350	17
2014/15	3,785	939	2,350	16,319	12	18,681	11,246	3,575	210	3,650	25
2015/16	3,268	859	3,650	12,888	33	16,571	9,153	3,450	168	3,800	30
2016/17	3,848	972	3,800	17,170	7	20,977	14,917	3,250	60	2,750	15
2017/18	4,492	1,014	2,750	20,923	3	23,676	16,281	3,225	-30	4,200	22
2018/19	4,038	990	4,200	18,367	3	22,570	14,700	2,975	-55	4,950	28
2019/20	4,650	932	4,950	19,913	3	24,866	15,300	2,150	-34	7,450	43
2020/21	3,323	957	7,450	14,608	2	22,060	16,050	2,400	-40	3,650	20
2021/22	4,153	919	3,650	17,523	5	21,178	14,050	2,550	-22	4,600	28
2022/23	2,950	1,068	4,600	14,468	2	19,070	12,450	2,050	-80	4,650	32
2023/24	2,606	1,008	4,650	12,066	2	16,718	11,750	1,850	-32	3,150	23
2024/25	3,139	1,000	3,150	14,410	3	17,563	11,900	1,700	-37	4,000	29
2025/26	3,168	955	4,000	13,897	5	17,902	12,000	1,600	-98	4,400	32
2026/27	2,985	970	4,400	13,300	5	17,705	12,300	1,600	-95	3,900	28

**Table 11: Foreign Cotton Supply and Distribution**  
**(1,000 HA and 1000 480-lb. Bales)**

Country Mktg Year	Area Harvested	Yield	Beginning Stocks	Production	Imports	Total Supply	Exports	Domestic Use	Loss	Ending Stocks
<b>Total Foreign</b>										
1995/96	29,435	560	29,346	75,756	26,586	131,688	19,621	75,206	-571	37,432
1996/97	28,547	541	37,432	70,872	28,161	136,465	19,737	76,725	-527	40,530
1997/98	28,347	563	40,530	73,281	25,896	139,707	19,277	75,721	-547	45,256
1998/99	28,547	548	45,256	71,902	24,021	141,179	19,209	73,957	-620	48,633
1999/00	26,908	573	48,633	70,775	27,871	147,279	20,376	80,340	-622	47,185
2000/01	26,663	582	47,185	71,261	26,166	144,612	19,416	82,851	-766	43,111
2001/02	28,187	610	43,111	78,972	29,245	151,328	18,081	86,573	-811	47,485
2002/03	25,702	622	47,485	73,421	30,084	150,990	18,500	91,020	-820	42,290
2003/04	27,037	613	42,290	76,133	34,074	152,497	19,314	91,768	-970	42,385
2004/05	30,297	706	42,385	98,270	33,910	174,565	20,513	102,316	-1,203	52,939
2005/06	29,440	691	52,939	93,498	44,621	191,058	27,249	110,577	-1,466	54,698
2006/07	29,172	737	54,698	98,812	38,266	191,776	24,457	118,990	-1,891	50,220
2007/08	28,638	764	50,220	100,458	39,439	190,117	25,234	119,306	-2,421	47,998
2008/09	27,771	761	47,998	97,040	30,534	175,572	16,946	107,087	-1,126	52,665
2009/10	27,139	730	52,665	90,988	36,931	180,584	23,768	116,034	34	40,748
2010/11	28,922	719	40,748	95,530	36,440	172,718	20,560	111,652	-100	40,606
2011/12	32,171	758	40,606	112,061	45,413	198,080	34,291	100,614	-155	63,330
2012/13	30,985	766	63,330	108,987	47,469	219,786	33,346	104,245	-825	83,020
2013/14	29,507	780	83,020	105,699	41,423	230,142	30,760	105,690	-330	94,022
2014/15	30,157	749	94,022	103,712	36,516	234,250	25,018	109,250	-2	99,984
2015/16	27,506	666	99,984	84,120	35,593	219,697	25,751	110,072	-79	83,953
2016/17	25,932	738	83,953	87,930	37,753	209,636	23,166	113,282	-124	73,312
2017/18	28,679	764	73,312	100,675	41,333	215,320	25,281	119,707	-165	70,497
2018/19	28,376	732	70,497	95,365	42,371	208,233	26,636	115,930	-75	65,742
2019/20	29,440	727	65,742	98,293	40,722	204,757	25,510	103,048	-20	76,219
2020/21	27,981	768	76,219	98,653	48,576	223,448	32,413	122,068	-100	69,067
2021/22	27,848	757	69,067	96,812	42,912	208,791	28,616	113,158	426	66,591
2022/23	28,582	773	66,591	101,451	37,736	205,778	24,104	110,650	-185	71,209
2023/24	28,292	771	71,209	100,168	44,043	215,420	32,315	112,981	-175	70,299
2024/25	26,881	850	70,299	104,931	43,028	218,258	30,526	117,407	-190	70,515
2025/26	26,256	902	70,515	108,744	43,775	223,034	31,776	118,533	-140	72,865
2026/27	26,256	852	72,865	102,744	43,364	218,973	31,044	120,088	-100	67,941